

CRUISE SHIP

Application Guide



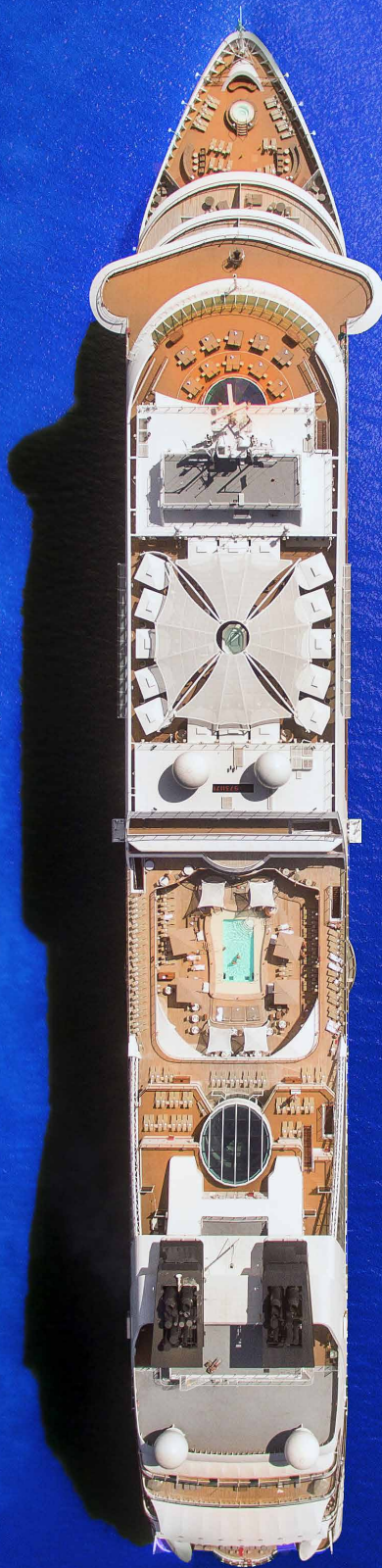
Cruise Ship Features



- Multiple, connected spaces
- Architainment, theatrical, and production lighting
- Multipurpose venues with changing moods
- Divisible public spaces and independent control
- Constantly shifting crews and novice users
- Self-contained system maintained on site

Cruise Ship Spaces

- **Lobbies** – get atmospheric looks or host small performances in public spaces, with moods that shift automatically throughout the day or can be adjusted with a button press.
- **Bars and Restaurants** – have a fun family-friendly mood in the day, then get ready for the nightlife automatically—with space for a musical performance where you need it.
- **Retail and Leisure** – whether you're looking to up the energy or just want a chill vibe, get the perfect lighting for casinos, stores, and clubs.
- **Pool Deck** – hype the excitement in outdoor spaces, ensuring the party goes on no matter the weather.

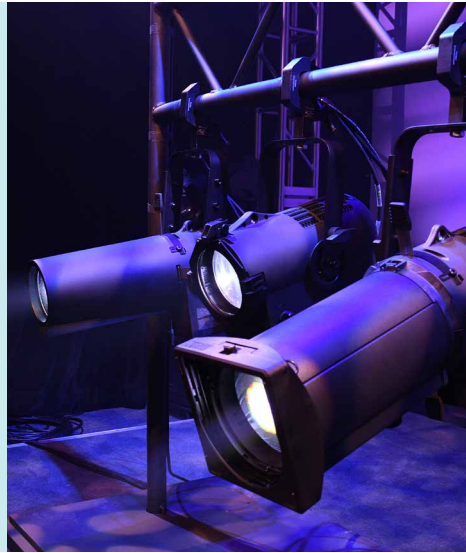


- **Automated Theatres** – anyone can run pre-programmed productions with minimal training using the automated lighting equipment in these show-ready spaces.
- **Performance Theatres** – be ready for any theatrical or musical event with an adaptable professional-quality lighting solution designed for multipurpose performance venues.
- **Ship-wide Control** – manage the lighting for the entire ship from anywhere with distributed control of timed events, emergency response, and maintenance.

Challenge

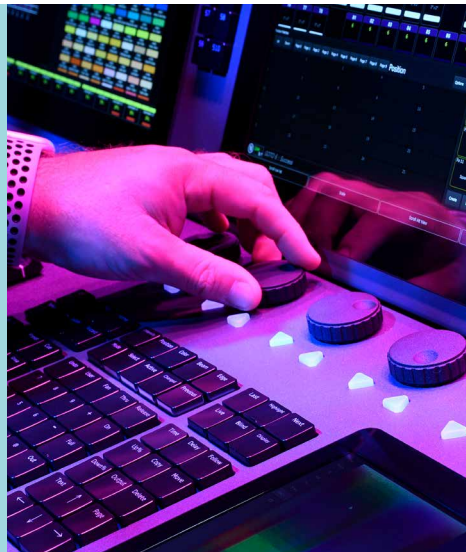
Solution

Cruise ships, particularly their multipurpose spaces, offer limited room for entertainment lighting. Adding a bit of performance lighting to a lobby, restaurant, or similar space typically means restricted mounting positions. Luminaires and controls need to be small enough to fit unobtrusively into corners, while being powerful enough to light small events.



An integrated lighting system from Vari-Lite provides the power and flexibility for entertainment lighting where you need it, with the compact Acclaim and VL800 luminaires and rack mountable FLX S24 consoles that can be mounted out of the way.

The crew on a cruise ship is constantly rotating, with novice users coming aboard all the time and little time to train on all the various ship systems. Lighting in the space should be very user friendly, allowing changes to happen automatically or at a simple button press.



Vari-Lite's intuitive control options make it easy for any user to quickly get the look they need, from the user-friendly FLX S Series consoles to the powerful Neo X Series. Simple touch-based adjustments and automatic scheduled events are also possible thanks to the Vision.Net architectural control system.

The pool deck on a cruise ship brings the party outdoors. These multifunctional spaces are host to parties, concerts, any number of other events. Lighting needs to be able to deliver high energy looks without being impacted by the harsh weather at sea.



Vari-Lite offers several powerful IP rated luminaires, perfect to amp up the excitement in any outdoor space, from fixed luminaires like the Leko® LED Outdoor and SL Punclite 220 to moving heads like the VL3600 Profile IP.

Challenge

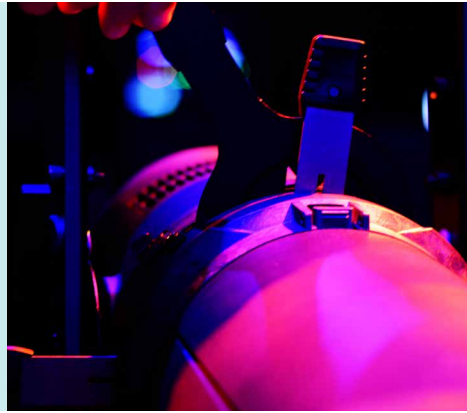
The power on a cruise ship is limited and is often not that stable or “clean.” To minimize impact on the rest of the grid, luminaires and lighting controls need to be as energy-conscious as possible while still delivering great performance.

Lighting on a cruise ship is, by design, a permanent installation that are often hard to get to. There is generally no motorized rigging, with little-to-no capability for on-site maintenance. Entertainment lighting solutions, therefore, need to be reliable and designed for easy repair.

Solution

Vari-Lite’s energy-efficient LED luminaires have maximum output with less power usage, while emergency solutions like the Phase Loss Sense Panel ensure the system works properly even when the power isn’t stable.

Vari-Lite has been one of the most trusted names in entertainment lighting for over 40 years. Our products and solutions maximize reusability, serviceability, and upgradeability, for a more reliable, longer-lasting product.



CONNECTIVITY (120V)

Neo X Series Consoles - high-performance lighting console designed for professional productions.

FLX S Series Console - intuitive lighting console to create beautiful looks in less time.

Neo Playback Controller - the power of a Neo X console in a rackmount format for archtainment applications.

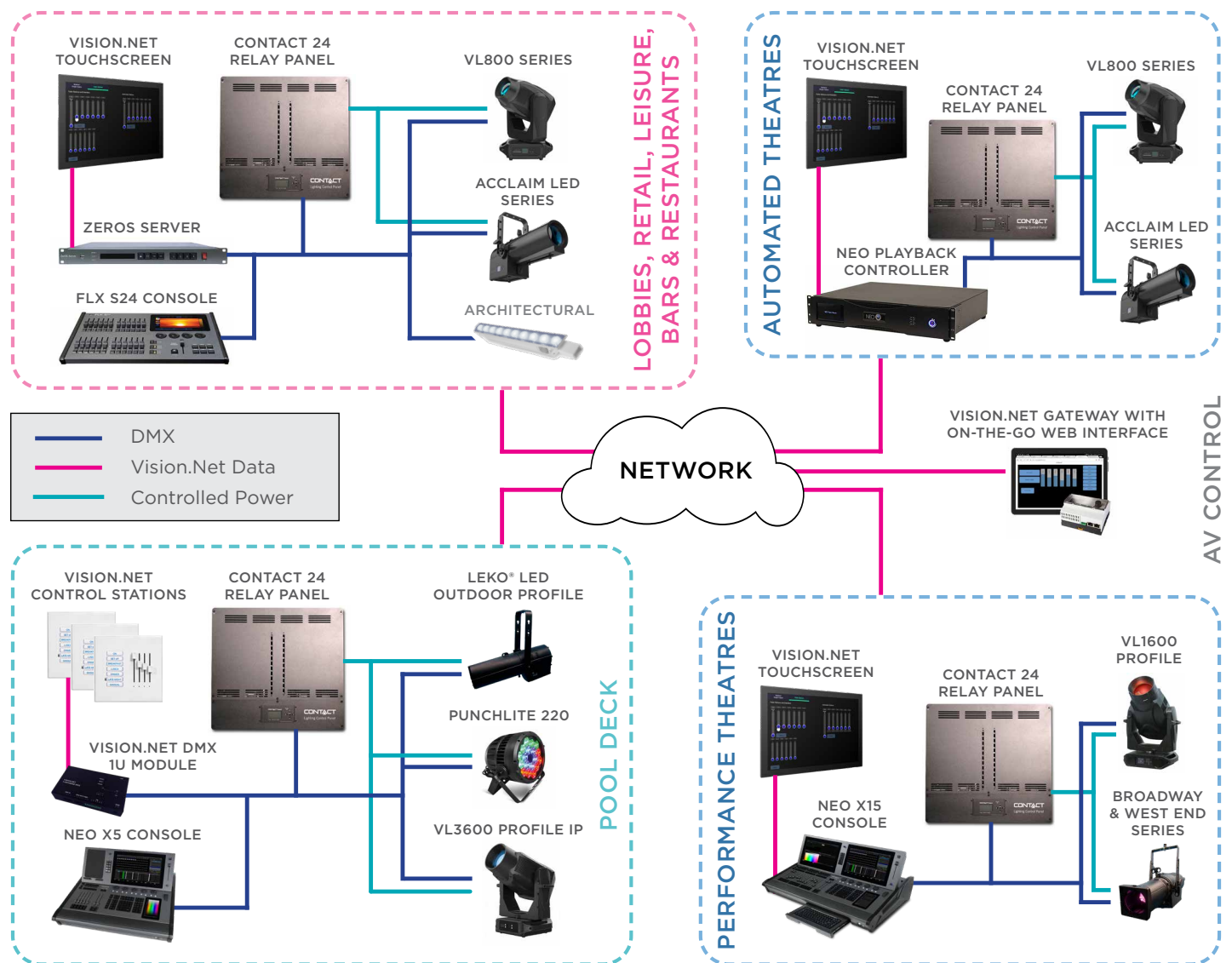
ZerOS Server - intuitive, cost-effective control of archtainment lighting.

Vision.Net 10.1" Touchscreen - touch-based panel to control a lighting system.

Vision.Net Control Station - simple interface for controlling lights during simple events.

Vision.Net Gateway with DMX Module - DIN-rail mounted gateway with 4 DMX ports for house and stage light control.

Contact 24 Relay Panel - modular panel providing relay-controlled 120V power to fixtures.



CONNECTIVITY (230V)

Neo X Series Consoles - high-performance lighting console designed for professional productions.

FLX S Series Console - intuitive lighting console to create beautiful looks in less time.

Neo Playback Controller - the power of a Neo X console in a rackmount format for archtainment applications.

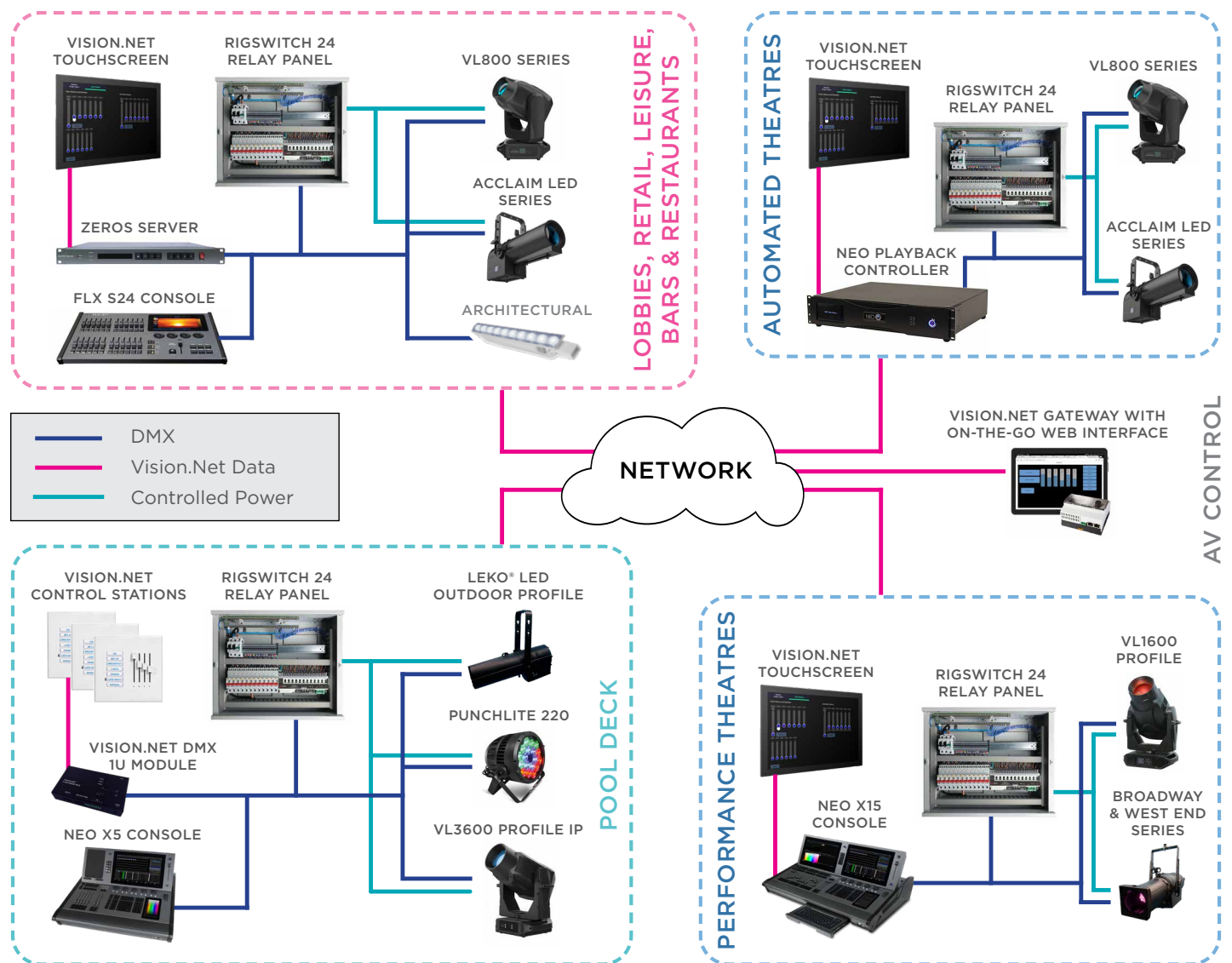
ZerOS Server - intuitive, cost-effective control of archtainment lighting.

Vision.Net 10.1" Touchscreen - touch-based panel to control a lighting system.

Vision.Net Control Station - simple interface for controlling lights during simple events.

Vision.Net Gateway with DMX Module - DIN-rail mounted gateway with 4 DMX ports for house and stage light control.

RigSwitch 24 Relay Panel - modular panel providing relay-controlled 230V power.



Key Luminaires



- **VL2600 Series** - General-use fixtures with high output and a robust feature set.



- **VL5LED WASH** - A broad color spectrum and excellent quality of light for a great stage wash.



- **VL3600 Profile IP** - large-scale, high output production profile fixture designed to withstand inclement weather.



- **VL800 Series** - family of compact fixed and moving luminaires for events of any size.



- **VL1600 Profile** - precision high-output profile luminaire designed for theatre and studio.



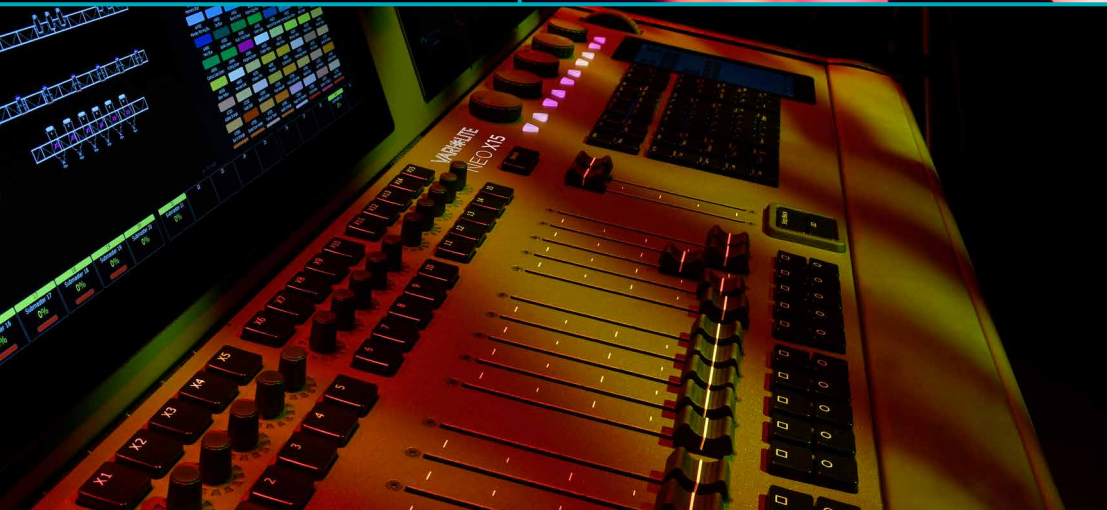
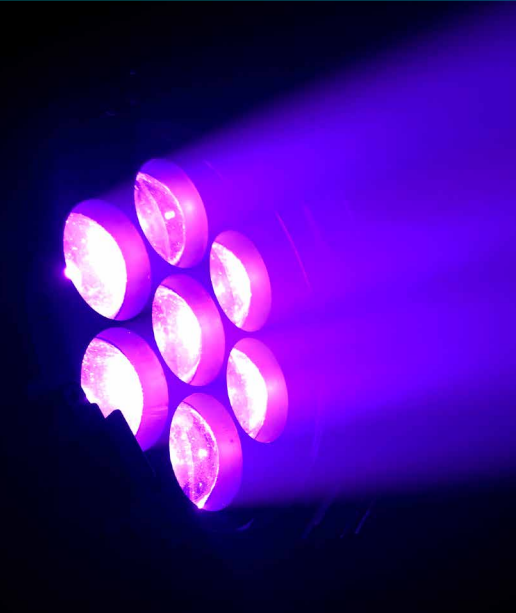
- **SL PunchLite 220** - high output IP-rated PAR with honeycomb lens and motorized zoom.



- **Broadway & West End Series** - full range of premium theatrical luminaires featuring high CRI and a broad color spectrum.



- **Acclaim LED Series** - family of cost-effective, high output theatrical luminaires including zoomspot, profile, Fresnel, and cyc fixtures.



VARI-LITE

Front cover photos by Jamie Morrison, (top left), Colin Lloyd (top right), Vidar Nordli Mathisen (bottom left) Becky Fantham (bottom right). Other photos: Sinitta Leunen (page 5) and Kobe Subramaniam (page 8). On Unsplash.

©2023 Signify Holding. All rights reserved. All trademarks are owned by Signify Holding or their respective owners. The information provided herein is subject to change, without notice. Signify does not give any representation or warranty as to the accuracy or completeness of the information included herein and shall not be liable for any action in reliance thereon. The information presented in this document is not intended as any commercial offer and does not form part of any quotation or contract, unless otherwise agreed by Signify. Data subject to change.

VARI-LITE

www.vari-lite.com

September 27, 2023